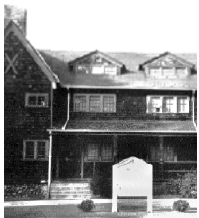


ST. ANDREW'S, AYER A TRADITION OF MISSION



St. Andrew's Church was founded in October 1889 as a mission of nearby Groton School by its headmaster, the Rev. Dr. Endicott Peabody. The present attractive stone church was completed in December 1892.



In 1895, St. Andrew's founded its own mission church in Westford, erected a building in 1903, and supported the mission until 1962 when it became an independent parish, now known as St. Mark's Church.



Loaves & Fishes, Ayer's local food pantry, was started at St. Andrew's in 1983. Shown here, our parishioners participate in the Good Friday Walk, its largest fundraiser, both as organizers and sponsored walkers.



A regular fund-raising concert at St. John's Chapel at Groton School, featuring members and friends of the Boston Symphony Orchestra, is one of the diverse ways by which St. Andrew's supports its outreach efforts.



Having heard about the Alex's Lemonade Stand Foundation, St. Andrew's Sunday School students set up their own stand on the Ayer Rail Trail and raised \$158.00 for pediatric cancer research in 2008.



We continue to embrace our commitment to mission by sharing our facilities with the Bethel Evangelical Free Church, a Korean speaking congregation established in 2008 by Pastor Kwangchul Kim and his family.



The Diocese of Massachusetts

The Episcopal Diocese is home to 72,000 people in 194 congregations in cities and towns across eastern Massachusetts, Cape Cod and the islands. Our congregations make up our diocese, and our diocese is part of the wider Episcopal Church, which in turn is part of a larger, global community of Anglican Christians.



Diocesan Mission Strategy

Inviting: We will bear witness to God's reconciling love across boundaries of race and class, generation and language.

Forming: We will work, study, pray and give for our lifelong conversion in Christ.

Sending: We will send one another in the power of the Spirit into the ministries of our daily lives.

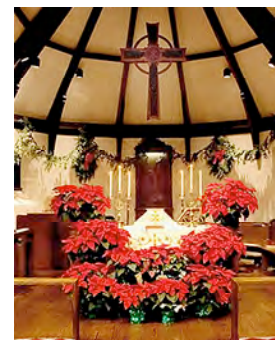
Serving: We will show forth the just reign of God in advocacy and action.

Diocesan Deaneries

The parishes of the diocese are divided by region into twelve deaneries. Deaneries provide pastoral support and education for Episcopal clergy and congregations in Massachusetts and have a governmental function as well, since they each have representation on the Diocesan Council.

ST. ANDREW'S EPISCOPAL CHURCH

INVITES YOU TO...



7 FAULKNER STREET
AYER, MASSACHUSETTS 01432
www.standrewsayer.org

SEARCH COMMITTEE
PHONE: (978) 375-5288
EMAIL: standrewsayer@gmail.com

GET TO KNOW US

The Word and the Eucharist are at the heart of St. Andrew's Church life. Our good works proceed from our faith. St. Andrew's is a small, inclusive church that values the participation and contributions of all age groups.

We are a faith community where children are welcomed into strong intergenerational relationships that foster mutual support.

Due to our historical roots as a mission church, we are strongly drawn to community outreach as a parish and it is our goal to tithe to outreach as we have done in the past.

St. Andrew's is committed to attracting more families and individuals interested in an active church life.

Our ideal leadership dynamic consists of a balanced partnership between ordained leadership and parish members.



OUR TOWN

Ayer, Massachusetts is a small town centered around a traditional Main Street. Located 35 miles northwest of Boston, Ayer is rich in history and family friendly, and offers easy access to the ocean, mountains and urban areas of New England. Our parishioners come from Ayer, as well as the surrounding towns -- primarily Groton, Harvard, Shirley, Devens, and Littleton. The towns we serve have a combined population of 40,450.

GROW WITH US

Our parish hopes to:

Enrich our blend of traditional liturgy & worship and progressive & prophetic preaching.

Serve as a beacon for young families by providing a strong Sunday school and youth ministry.



Increase our active involvement and visibility in the surrounding communities, especially Ayer and Devens, through outreach, civic participation, and the sharing of resources.

Continue to ensure that each of our facilities is welcoming, safe and accessible to all.

Strengthen the partnership between clergy and an empowered and equipped lay leadership.



Maintain a balanced budget and commit 10% of that budget, excluding our diocesan assessment, to outreach.

OUR FACILITIES

St. Andrew's facilities are in good condition, and consist of a beautiful fieldstone church (1892), a four bedroom rectory (1901), and a brick parish hall (1955). Our parish hall has a large multi-purpose room on the main floor and classrooms in the basement. We are located within a few blocks of the downtown business district, commuter rail station, town library, and the Nashua River Rail Trail.

SERVE WITH US

We seek a half-time rector who is:

An **inspiring preacher**, who can deliver sermons that are biblically sound and apply to our daily lives; a minister who can support music in our worship.

A **pastor for people of all ages**, maintaining our family-friendly culture, who enjoys serving children, teens, and young adults in their developing faith and who includes them in our parish life.

A **compassionate minister** who supports our desire to make a difference in the lives of others, spiritually, physically, and financially.

An **active participant** in fellowship and community events.

A **communicator** who has demonstrated the ability to develop and empower lay leadership and volunteers, and who will foster an open, collaborative and positive environment.

Someone who loves us as we are and helps us to become more, through spiritual guidance and pastoral care.

OUR FINANCES

We are proud that, despite tough economic times, we finished both 2007 and 2008 in the black. We have planned a balanced budget of nearly \$150,000 for 2009, allowing us to pay salaries commensurate with Diocesan Guidelines. Our investments are valued at over \$230,000. Recent capital improvements include the addition of a handicap ramp to our parish hall and a new roof with additional insulation for our rectory.