



# Parish Historians Society

Volume XIII, Issue I

Spring 2015

## *Reminder*

*PHS Annual Meeting*

**Register Now!**  
See page 3 - 4.

**Everyone is invited!**

## **PHS Annual Meeting**

### **“The Quick and the Dead”**

### **Christ Church, Quincy Saturday, April 25, 2015**

**9:30 am – 3:00 pm**

**Registration begins at 8:30 am  
12 Quincy Ave., Quincy**

**Registration Fee \$20, includes lunch.**

**Please register by April 15.**

### ***On the Program:***

In the morning we explore two topics of local historical interest:

The Rev. Matthew Cadwell, Ph.D. will discuss early Loyalists, with a focus on colonial Anglicans and parishes.

Ms. Meg L. Winslow, Curator of Historical Collections at Mount Auburn Cemetery, will present “Discovering Mount Auburn: America’s First Rural Cemetery”.

For our afternoon workshop:

Ms. Lynn Smith, Registrar-Historiographer of the Episcopal Diocese of Massachusetts, will consider the how and why of oral history for parish historians

All will be held at the historic Christ Church, Quincy, our oldest Episcopal parish in Massachusetts. More about our speakers and Christ Church is on page 2 with the agenda, registration form and directions on pages 3-4.

***All are invited to attend—***

***Parish historians, parish administrators, music directors & choir members and others interested in the history of Massachusetts Episcopal churches and their preservation.***

### ***Inside this issue:***

***PHS 2015 Speakers & Venue ..... 2***

***Annual Meeting Registration Form, Agenda, etc. .... 3 & 4***

***Fisk Organ Follow-Up ..... 5***

***PHS 2014 Annual Meeting in Marblehead. .... 6***

***Tips for Celebrating An Anniversary ..... 7***

## 2015 Annual Meeting - continued

**The Rev. Matthew Cadwell, PhD** is Rector of Emmanuel Church, Wakefield, MA since 2008 and is an adjunct faculty member at Trinity College, University of Toronto, where he specializes in Anglican history, theology, and ecclesiology. A graduate of the Episcopal Divinity School, Cambridge, MA and Gustavus Adolphus College in Minnesota, he received a doctorate in historical theology from St. Michael's College in the University of Toronto and the Toronto School of Theology.



**Meg L. Winslow** is Curator of Historical Collections at Mount Auburn Cemetery. This beautiful cemetery on the Cambridge/Watertown border is the first garden cemetery in North America, established in 1831 in alliance with the Massachusetts Horticultural Society. As Curator of Collections Ms. Winslow is responsible for collecting, protecting, and providing access to the Cemetery's unparalleled collections including interment records, horticultural records, correspondence, maps and plans, photographs, books, fine art, decorative arts, and significant monuments on the grounds. This popular speaker, well-known to local historical societies, is a graduate of Concord Academy and Carleton College, Minnesota. See: <https://vimeo.com/mountauburncemetery>



**Ms. Lynn Smith** has been a member of the Parish Historians' Society for over two decades serving as clerk, president and currently as the convener of the Society. She presently serves as registrar-historiographer and acting archivist of the diocese. Her interests in organizational and local history led to participation in her town historical society as well as her parish. Both through her local historical society and at her church, Ms. Smith has organized and conducted oral history interviews of individuals and groups. She will share the knowledge she gained as researcher, initiator, administrator, interviewer, technician, and transcriber of oral histories.



**The Rev. Clifford R. Brown** has led Christ Church since 2005. Prior to coming to Quincy, he served as Urban Assistant Minister at St. Stephen's Parish, Lynn, MA and as an Intern at the Church of Good Shepherd, Acton, MA. He holds a M.Div. from Andover Newton Theological School, Newton, MA and a Certificate in Anglican Studies from Bishop Tucker Theological College, Munoko, Uganda.



**Christ Church, Quincy**, is the longest, continually-active Episcopal congregation in Massachusetts with the earliest known services known to be held in 1689 by a visiting clergyman. Until the arrival of a royal governor and the establishment of King's Chapel in 1686, Anglicans met in people's home to read services from the Book of Common Prayer. The first missionary to lead the congregation came in 1701. In 1727, having been relieved of paying taxes to support the town church, the congregation was able to support their own minister, build a church building and thrive for the next 50 years. When their loyalist rector was forced to flee in 1777, Quincy was again without a minister, but continued to hold lay-led services until 1822. Its first Sunday School classes were in 1820, with support from members of the Adams family. A new wooden gothic church building was built nearby in 1832 at the church's present location. When this building burned in 1859, a stone structure was built. It too burned in 1873 and the current English Gothic-style church was built. The congregation grew throughout the 19th and early 20th centuries leading to the founding of additional Episcopal churches nearby. The parish hall has been built, rebuilt, adding on to and modified over the years and the rectory has been renovated to provide needed affordable housing.



## DIRECTIONS TO CHRIST CHURCH, 12 QUINCY AVE., QUINCY, MASSACHUSETTS

### From the South:

Take Route 18/53 North through Weymouth Landing. The road becomes Quincy Avenue. Christ Church is located at the corner of Quincy Ave, Hancock Street, and Elm Street.

Or, take Route 3 North to Exit 19. (Burgin Parkway/Quincy Center/MBTA Station).

Follow Burgin Parkway to the Hannon Parkway. Turn right onto the Hannon Parkway, and then right onto Hancock Street. Christ Church is the granite church across from Firestone.

**From the North:** Take Route 93 South to Exit 7 (Route 3/Braintree). Immediately Take Exit 19A (Burgin Parkway/ Quincy Center/MBTA Station). Follow Burgin Parkway to the Hannon Parkway. Turn right onto the Hannon Parkway, and then right onto Hancock Street. Christ Church is the granite church across from Firestone.

**From the West:** Route 128S/93N to Exit 19 (Burgin Parkway/Quincy Center/MBTA Station). Follow Burgin Parkway to the Hannon Parkway. Turn right onto the Hannon Parkway, and turn right onto Hancock Street. Christ Church is the granite church across from Firestone.

### BY PUBLIC TRANSIT

**Train:** Take the Red Line to Quincy Center T station and walk 10 minutes down Hancock to Quincy Ave.

**Bus:** The 225 route stops near the church and buses 215, 230, 236, & 238 stop one block away.



### Transportation:

Do you require a handicap parking space? \_\_\_\_\_

### Would you like to carpool to Christ Church, Quincy?

If you would either like a ride OR can offer to pick up people from your geographical area/deanery please respond below. We will do our best to arrange rides.

Would you offer to be a driver in a carpool?      Yes                      No

Would you like a ride?                                      Yes                      No

What geographical area are you starting from? \_\_\_\_\_

If you are not the Parish Historian for your church, please let us know who is and his/her contact information to help ensure that they receive our communications.

Name: \_\_\_\_\_

Email: \_\_\_\_\_

Phone: \_\_\_\_\_

We do not have an appointed parish historian \_\_\_\_\_ (check if applicable)

## Fisk Organ Follow-up

— *By Frances Stith Nilsson, St. Michael's Church, Marblehead*

On the cover of the February 2015 *The American Organist Magazine* is a vivid photo of Opus 141, the C. B. Fisk organ at St. Paul's Chapel, Rikkyo University, Niiza, Japan. This is the same organ that PHS attendees saw and heard during their tour of the C.B. Fisk Inc. organ factory in Gloucester, Massachusetts in spring 2013. In July 2013 the organ was packed and shipped to Japan and installed in St. Paul's Chapel in the fall. During our tour Gregory Bover indicated that it takes 6 months or more to complete the voicing of an organ as it adjusts to its new environment. So it was not until July 2014 that the 'Big Blue' as it is called had its inaugural concert.

David C. Pike's related article in the American Guild of Organist's magazine describes 3 two-manual organs from C.B. Fisk including the new 2011 Fisk organ and renovations at Christ Church, Andover.



PHS meeting attendees at the C.B. Fisk Factory.  
*Photo: E.K.M. Denniston*



Opus 141 installed at Rikkyo University, Niiza Japan. *Photo: C. B. Fisk, Inc.*

Are you looking for information on the organ in your church, or wondering out what may have been installed in the past? Check the Online Catalog of Pipe Organs of North America maintained by the Organ Historical Society (see box for link). They also welcome new information—photos, stoplists, etc.—that you may have unearthed.



Scale model of opus 141 at C.B.Fisk Inc.  
*Photo:F.S. Nilsson*

### Sources and Related Web Sites

<https://www.agohq.org/current-issue/>

[http://www.cbfisk.com/instruments/opus\\_141](http://www.cbfisk.com/instruments/opus_141)

[http://www.cbfisk.com/news/opus\\_141\\_enroute\\_japan](http://www.cbfisk.com/news/opus_141_enroute_japan)

<http://database.organsociety.org>

[http://www.diomass.org/webfm\\_send/2145](http://www.diomass.org/webfm_send/2145)—Spring 2014 PHS Newsletter



## Parish Historians Meeting, 2014

*By Elaine K. M. Denniston, PHS Clerk, St. Peter's Episcopal Church, Cambridge*

On May 10, 2014, the Parish Historians' Society (PHS) held its 2014 Annual Meeting at the historic St. Michael's Episcopal Church in Marblehead (St. Michael's). In 2014, St. Michael's was celebrating its 300th anniversary.

The three speakers at the PHS meeting spoke about the architecture, the liturgy and music covering 300 years.

The first speaker, the Rev. Andrew Stoessel, spoke about the church's liturgical history. He noted that when St. Michael's was founded 1714, many of its congregants were the poorer fishermen and residents of Marblehead. Later, in the mid 1700's Marblehead became a wealthy community. The Rev. Stoessel also spoke about the early rectors of St. Michael's. He mentioned that these early Rectors received their salaries from England, through the Society for the Promotion of the Gospel in Foreign Parts (SPG). Also, as slavery existed in New England at that time, one or two of the early rectors kept slaves. St. Michael's closed during the Revolutionary War (as an Anglican church it was perceived as being too closely aligned with England, and its rector at the time was an ardent loyalist!). St. Michael's also was closed at various times in the early 1800's because of the poor economic conditions in the community and at the parish.

Architect Edward Nilsson spoke about the architecture of St. Michael's. He informed us that the design of St. Michael's was based on a church in London by Christopher Wren and Robert Hooke, (St. Martin, Ludgate) who in turn likely based their design on a Dutch church in Haarlem. He also went through the various modifications to St. Michael's through its 300 years. One of the more important modifications to St. Michael's was in 1833. The altar and reredos were moved to the north wall to be on the same wall as the pulpit, and new slip pews faced the north wall. The windows were also replaced with pointed arch

windows.. In 1845 after an adjoining building was added, the current pulpit was built to the left (without the sounding board) with the current altar arrangement against the north wall. In the early 1970s a separate altar table was placed close to the pews facing the congregation.

Mark Nelson, organist of St. John's Church in Gloucester, gave the history of the music and of the hymnals in which the music that would have been sung or played in the Episcopal Church from the 1700's until the present. In the first hymnal there were 51 hymns. (William Billings (1746 – 1800), a noted early American composer wrote a book on how to sing. He is also the composer of the rousing Easter Hymn.) The early 1700's hymnals would have had only the words and no service music. Over the next century, the sources and number of hymns increased. In the 1800's, music was published for choirs. In 1871, there were 520 hymns in the hymnal in use at that time. In the 1892 Hymnal contained over 500 hymns and 37 pages of service music. It is in that hymnal that hymns from the English "Hymns Ancient and Modern" first appeared. Mr. Nelson also spoke about the other hymnals that have appeared and been in use over the next century and a half, right up to our 1982 hymnal.



*Related article on page 5*

# Tips for Celebrating an Anniversary

— *By Frances Stith Nilsson, St. Michael's Church, Marblehead*

Involve and invite your community! St. Michael's had a once in a lifetime celebration in 2014, celebrating its 300 years worshipping in Marblehead in our original 1714 building. We found talents within our parish and partnered with our local community cable station, newspaper and museums.

- Start planning several years before and use an anniversary to create a vision of the future, energy, excitement and fund-raising for major changes.
- Local media are often looking for content. Our local community cable station MHTV videoed our lectures and steeple raising, and with additional help videoed our major celebratory service and reception. All were rebroadcast on cable TV with subsequent DVD copies. Some were made available online. Church School youth did Youth news segments on the church and bell. Our cable station has also worked with the local Rotary Club to create oral histories of key old-timers including some of our parishioners.
- Meet with your local newspaper community editor to describe your activities and pave the way for press releases and greater visibility. Then link to their coverage in emails and your Facebook account.
- The local historical society helped us promote events to their constituents as well as answer historical questions that arose.
- Quilters within the parish helped the youth to create a quilt. A parishioner who is an exhibit designer oversaw the creation of a portable tower exhibit.



- Local college interns, high school volunteers and family members helped us scan old photos, inventory items and photograph exhibit items and events.

- Invite your Outreach partner —Fr. Max Accime from our sister parish at St. Thomas Archaias, Haiti, came for our celebration, enabling all to get to know him

- Participate in local parades—One of our parents built a model of our church that children pulled in the July Horribles parade, in our Michaelmas celebration and again at Christmas.

## Related web sites

[www.stmichaels2014.org](http://www.stmichaels2014.org)

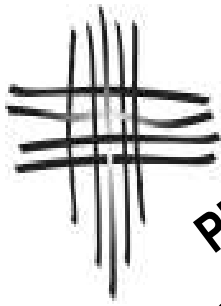
[www.flickr.com/photos/stmichaels1714/sets](http://www.flickr.com/photos/stmichaels1714/sets)

[vimeo.com/stm1714](http://vimeo.com/stm1714)

[www.stmichaels1714.org/about\\_history.htm](http://www.stmichaels1714.org/about_history.htm)

**THE EPISCOPAL DIOCESE OF MASSACHUSETTS**

Parish Historians Society  
138 Tremont Street  
Boston, MA 02111



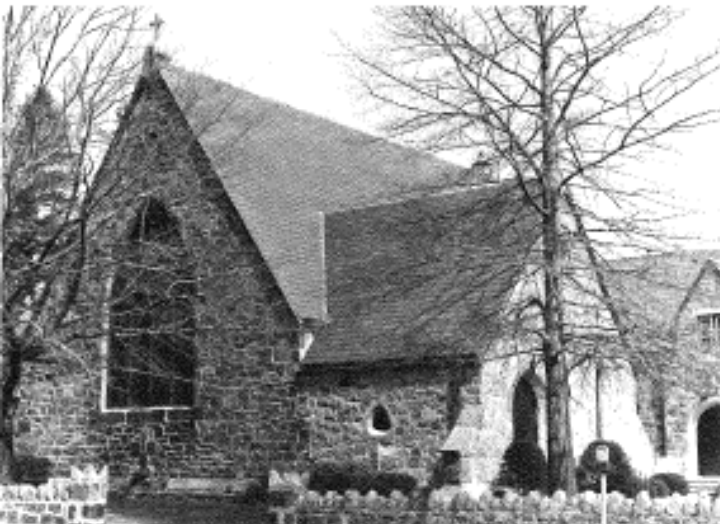
**PHS Annual Meeting**  
**Saturday, April 25, 2015**  
**Christ Church, Quincy**

**PHS Annual Meeting**  
**Saturday, April, 2015, 9:30 AM—3 PM**

**Register by April 15.**  
**See inside for more information and registration form.**

**Christ Church, Quincy**  
**12 Quincy Ave, Quincy, Massachusetts 02169**  
**617-773-0310**  
**[www.christchurchquincy.org](http://www.christchurchquincy.org)**

**'Historic Christ Church: Worshiping Together Since 1689'**



**Parish Historians Society**  
**Diocese of Massachusetts**

**PHS Executive Committee**

**Convener:** Lynn Smith, Registrar-Historiographer

**President:** Allison Andrews,  
Grace Church, Medford

**Clerk:** Elaine K. M. Denniston,  
St. Peter's Church, Cambridge

**Members-at-Large:**

Diane Grondin,  
Christ Church, Quincy

Cleo Messinger,  
St. John's Church, Newtonville

Frances Stith Nilsson,  
St. Michael's Church, Marblehead



**For more information on the Parish Historians' Society contact:**

Lynn Smith: (617) 482-4826 ext. 488  
Email: [PHS\\_Exec@hotmail.com](mailto:PHS_Exec@hotmail.com)

Web site:

[www.diomass.org/parish-historians-society](http://www.diomass.org/parish-historians-society)